

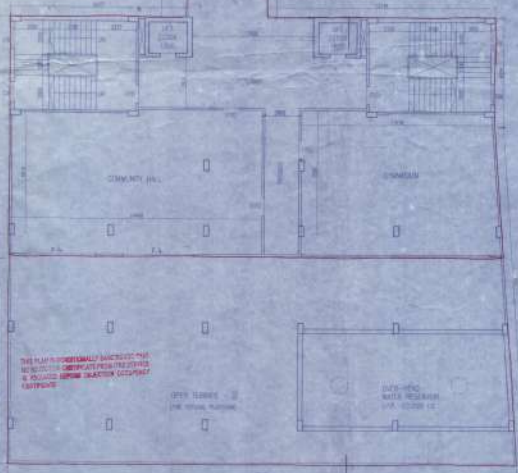
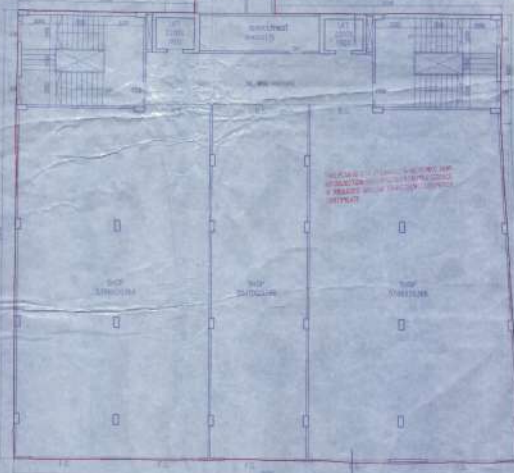
EXISTENTIALLY APPROVES THE PLAN AND NOTED  
 FOLLOWING REVISIONS SPECIFICALLY BY PLAN'S  
 DATES OF REVISION & KEEP COPIES OF  
 BUILDING OFFICE.

PLACES IN THE BUILDING COMMITTEE MEETING  
 HELD ON 12-11-11 & RECOMMENDED

Valid for Three Years  
 From the Date of  
 Transformation - 05-16-2014

Passed in the City Meeting  
 Held on 08-11-11

Passed in the Board Meeting  
 Held on 08-11-11



TYPICAL FLOOR PLAN  
 1ST-5TH

COMMERCIAL BLOCK

6TH FLOOR PLAN  
 SCALE 1/8"=1'-0"

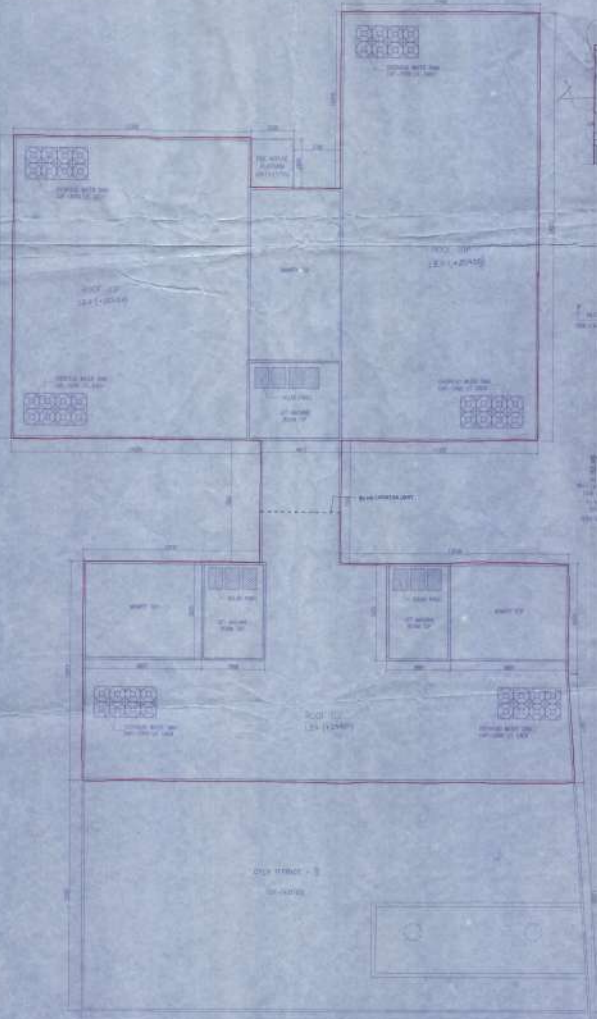
REVISIONS TO BE MADE BY THE ARCHITECT  
 IN ACCORDANCE WITH THE CITY ENGINEER'S  
 COMMENTS ON THE PREVIOUS SET OF PLANS.



May be Deleted  
 11-12-11  
 11-12-11  
 11-12-11

Professional Engineer  
 P. S. S. No. 5172  
 License No. 10000-0000

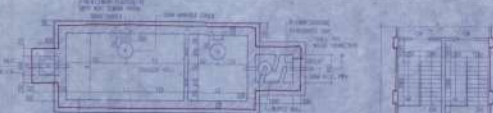
THIS PLAN IS PROPOSEDLY SUBJECT TO THE  
 REVIEW OF THE CITY ENGINEER AND THE  
 CITY ENGINEER'S OFFICE. THE CITY ENGINEER  
 IS NOT RESPONSIBLE FOR THE DESIGN OR  
 CONSTRUCTION OF THE PROJECT.



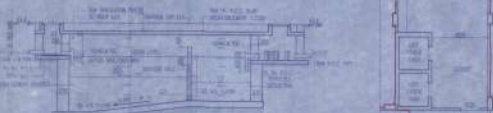
ROOF PLAN  
 SCALE 1/8"=1'-0"



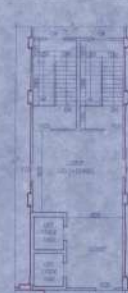
STAIR CASE PLAN  
 RESIDENTIAL BLOCK



PLAN OF CIRCULATING  
 CHAMBERS

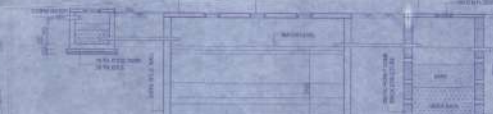


SECTION P-P  
 SCALE 1/8"=1'-0"

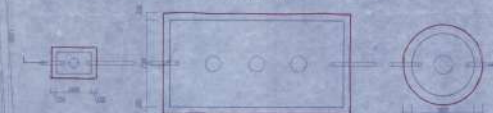


STAIRCASE PLAN  
 COMMERCIAL BLOCK

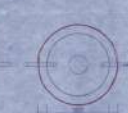
NO. OF STAIRS	1	2	3	4	5	6	7	8	9	10
NO. OF STAIRS	1	2	3	4	5	6	7	8	9	10



SECTION THROUGH XX



PLAN OF UPPER STORAGE WATER STORAGE TANK  
 CAPACITY (SCALE 1/8"=1'-0")



PLAN OF RECTANGULAR TANK  
 SCALE 1/8"=1'-0"

PROJ. BASEMENT + 8 STORES RESIDENTIAL  
 COM COMMERCIAL (MERCANTILE RETAIL)  
 BUILDING AT BOSTON ROAD, BIRMINGHAM,  
 DIST. DAVENPORT

- 1. 1ST FLOOR ABOVE
- 2. 2ND FLOOR ABOVE
- 3. 3RD FLOOR ABOVE
- 4. 4TH FLOOR ABOVE
- 5. 5TH FLOOR ABOVE
- 6. 6TH FLOOR ABOVE
- 7. 7TH FLOOR ABOVE
- 8. 8TH FLOOR ABOVE
- 9. 9TH FLOOR ABOVE
- 10. 10TH FLOOR ABOVE
- 11. 11TH FLOOR ABOVE
- 12. 12TH FLOOR ABOVE
- 13. 13TH FLOOR ABOVE
- 14. 14TH FLOOR ABOVE
- 15. 15TH FLOOR ABOVE
- 16. 16TH FLOOR ABOVE
- 17. 17TH FLOOR ABOVE
- 18. 18TH FLOOR ABOVE
- 19. 19TH FLOOR ABOVE
- 20. 20TH FLOOR ABOVE
- 21. 21ST FLOOR ABOVE
- 22. 22ND FLOOR ABOVE
- 23. 23RD FLOOR ABOVE
- 24. 24TH FLOOR ABOVE
- 25. 25TH FLOOR ABOVE
- 26. 26TH FLOOR ABOVE
- 27. 27TH FLOOR ABOVE
- 28. 28TH FLOOR ABOVE
- 29. 29TH FLOOR ABOVE
- 30. 30TH FLOOR ABOVE
- 31. 31ST FLOOR ABOVE
- 32. 32ND FLOOR ABOVE
- 33. 33RD FLOOR ABOVE
- 34. 34TH FLOOR ABOVE
- 35. 35TH FLOOR ABOVE
- 36. 36TH FLOOR ABOVE
- 37. 37TH FLOOR ABOVE
- 38. 38TH FLOOR ABOVE
- 39. 39TH FLOOR ABOVE
- 40. 40TH FLOOR ABOVE
- 41. 41ST FLOOR ABOVE
- 42. 42ND FLOOR ABOVE
- 43. 43RD FLOOR ABOVE
- 44. 44TH FLOOR ABOVE
- 45. 45TH FLOOR ABOVE
- 46. 46TH FLOOR ABOVE
- 47. 47TH FLOOR ABOVE
- 48. 48TH FLOOR ABOVE
- 49. 49TH FLOOR ABOVE
- 50. 50TH FLOOR ABOVE
- 51. 51ST FLOOR ABOVE
- 52. 52ND FLOOR ABOVE
- 53. 53RD FLOOR ABOVE
- 54. 54TH FLOOR ABOVE
- 55. 55TH FLOOR ABOVE
- 56. 56TH FLOOR ABOVE
- 57. 57TH FLOOR ABOVE
- 58. 58TH FLOOR ABOVE
- 59. 59TH FLOOR ABOVE
- 60. 60TH FLOOR ABOVE
- 61. 61ST FLOOR ABOVE
- 62. 62ND FLOOR ABOVE
- 63. 63RD FLOOR ABOVE
- 64. 64TH FLOOR ABOVE
- 65. 65TH FLOOR ABOVE
- 66. 66TH FLOOR ABOVE
- 67. 67TH FLOOR ABOVE
- 68. 68TH FLOOR ABOVE
- 69. 69TH FLOOR ABOVE
- 70. 70TH FLOOR ABOVE
- 71. 71ST FLOOR ABOVE
- 72. 72ND FLOOR ABOVE
- 73. 73RD FLOOR ABOVE
- 74. 74TH FLOOR ABOVE
- 75. 75TH FLOOR ABOVE
- 76. 76TH FLOOR ABOVE
- 77. 77TH FLOOR ABOVE
- 78. 78TH FLOOR ABOVE
- 79. 79TH FLOOR ABOVE
- 80. 80TH FLOOR ABOVE
- 81. 81ST FLOOR ABOVE
- 82. 82ND FLOOR ABOVE
- 83. 83RD FLOOR ABOVE
- 84. 84TH FLOOR ABOVE
- 85. 85TH FLOOR ABOVE
- 86. 86TH FLOOR ABOVE
- 87. 87TH FLOOR ABOVE
- 88. 88TH FLOOR ABOVE
- 89. 89TH FLOOR ABOVE
- 90. 90TH FLOOR ABOVE
- 91. 91ST FLOOR ABOVE
- 92. 92ND FLOOR ABOVE
- 93. 93RD FLOOR ABOVE
- 94. 94TH FLOOR ABOVE
- 95. 95TH FLOOR ABOVE
- 96. 96TH FLOOR ABOVE
- 97. 97TH FLOOR ABOVE
- 98. 98TH FLOOR ABOVE
- 99. 99TH FLOOR ABOVE
- 100. 100TH FLOOR ABOVE

DATE: 11-12-11  
 DRAWN BY: P. S. S. No. 5172  
 CHECKED BY: P. S. S. No. 5172  
 APPROVED BY: P. S. S. No. 5172

PROF. ENGINEER  
 P. S. S. No. 5172  
 License No. 10000-0000

REVISIONS TO BE MADE BY THE ARCHITECT  
 IN ACCORDANCE WITH THE CITY ENGINEER'S  
 COMMENTS ON THE PREVIOUS SET OF PLANS.

PROF. ENGINEER  
 P. S. S. No. 5172  
 License No. 10000-0000

PROF. ENGINEER  
 P. S. S. No. 5172  
 License No. 10000-0000

PROF. ENGINEER  
 P. S. S. No. 5172  
 License No. 10000-0000

PROF. ENGINEER  
 P. S. S. No. 5172  
 License No. 10000-0000

PROF. ENGINEER  
 P. S. S. No. 5172  
 License No. 10000-0000

PROF. ENGINEER  
 P. S. S. No. 5172  
 License No. 10000-0000

PROF. ENGINEER  
 P. S. S. No. 5172  
 License No. 10000-0000